

Presence, Caring, and Strength by the Numbers



Family Strengthening Network 2026 Virtual Annual Summit

*Celebrating the impact of presence,
care, and connection across our network.*

Presented by

Helen Chan
Monica Charles
Delisa Culver





What the Numbers Can't Capture

Before we explore the data, let's reflect on the impact that isn't always measurable.



In one word or short phrase, what is something you give families or communities that data alone cannot measure?



Families Served - Prenatal Enrollments



1,200+

Welcome Baby
Prenatal Enrollments



150+

Home Visitation
Prenatal Enrollments



More than **1,350** families enrolled prenatally
across Welcome Baby and Home Visitation programs.

STANDOUT SITES



Adventist Health White Memorial Hospital



Martin Luther King Jr. Hospital



St. Francis Medical Center



St. Mary's Medical Center



Antelope Valley Medical Center



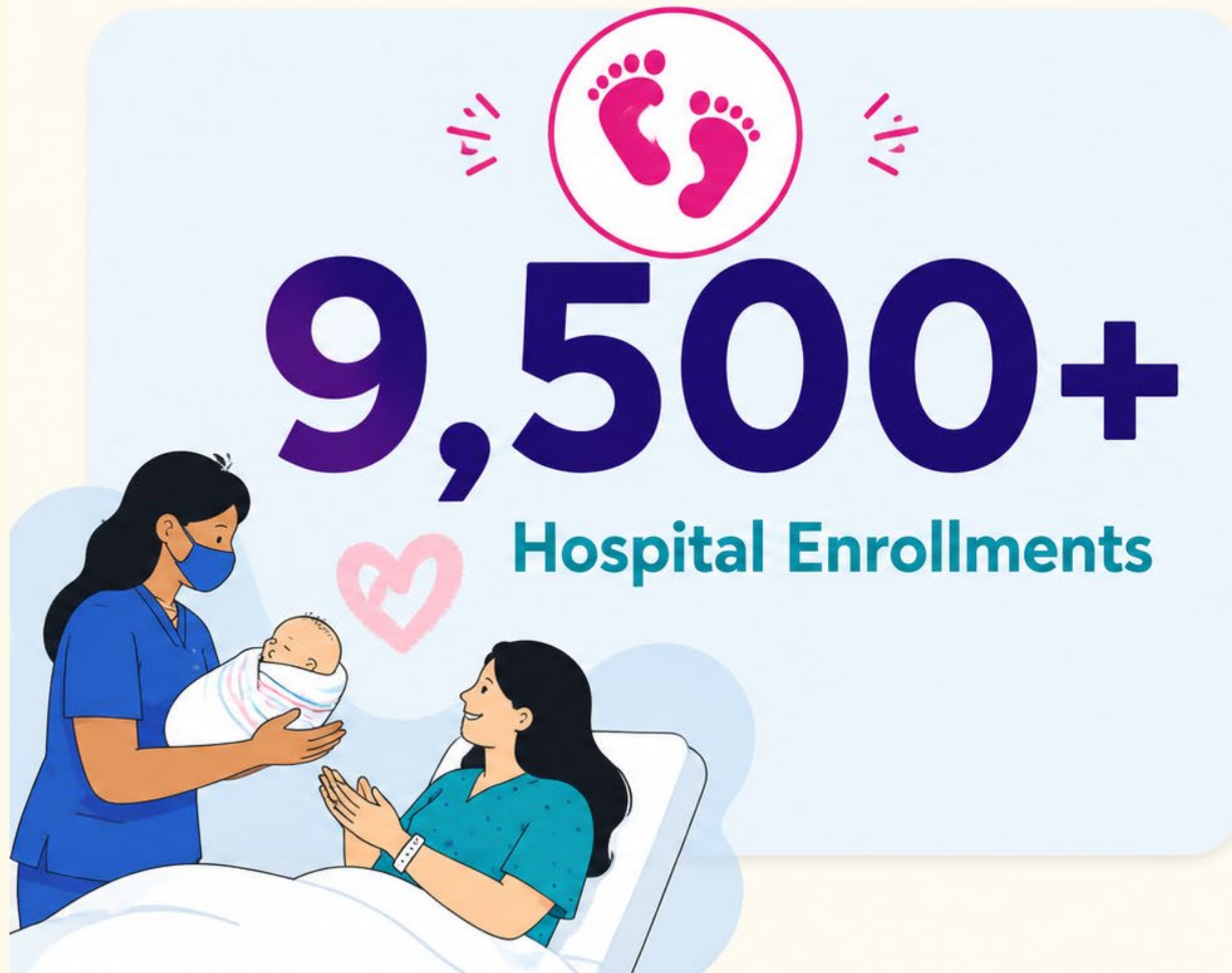
SHIELDS for Families



The Whole Child



Families Served - Hospital Enrollments



STANDOUT SITES

-  Adventist Health White Memorial Hospital
-  Providence Holy Cross Medical Center
-  MemorialCare Miller Children's & Women's Hospital
-  St. Francis Medical Center



Families Served - Home Visitation Enrollments



750+

Home Visitation Enrollments



STANDOUT SITES



Antelope Valley Partners
for Health



Children's Institute Inc.



SHIELDS for Families



The Whole Child



Families Served - Outreach Efforts in the Network



Continuous Quality Improvement (CQI) goal to improve outreach efforts



Families Served - Completed Visits – Welcome Baby

26,000+
Completed Welcome Baby Visits



20,000+

In-Person Visits



6,700+

Registered Nurse Visits



5,000+

Partner Attended



✦ **26,000+** opportunities to support families through education, connection, and care.



Families Served - Partner Involvement for Welcome Baby

Parenting partners are actively engaged in both **decision-making** and **daily interactions** with their children.

80%

of families reported that parenting partners and clients **equally share decisions** about their child's care and well-being.



90%

reported that parenting partners speak with their child on **20-30 days** each month.



Families Served - Completed Visits – Home Visitation



27,000+

Completed Home Visitation Visits



20,000+

In-Person Visits



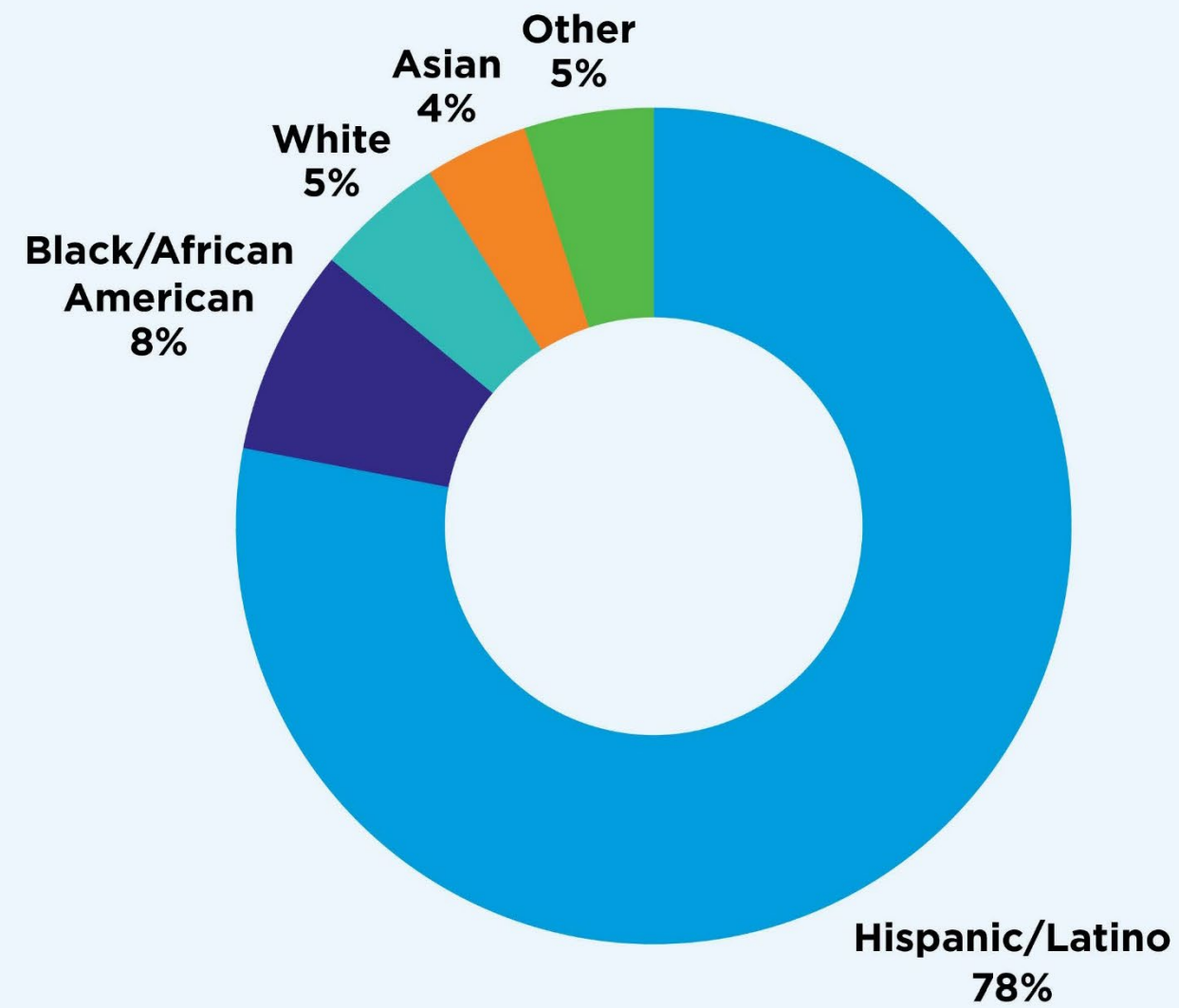
1,800+

Partner Attendance



Family Demographics

Race/Ethnicity



40+

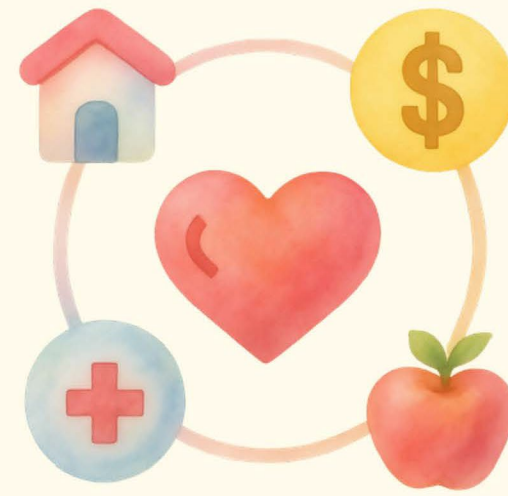
Languages Spoken,
Collectively



Family Demographics

3%

**Unstable Housing
Conditions**



5%

**History of
Domestic Violence**

7%

**Mental Health
Challenges**



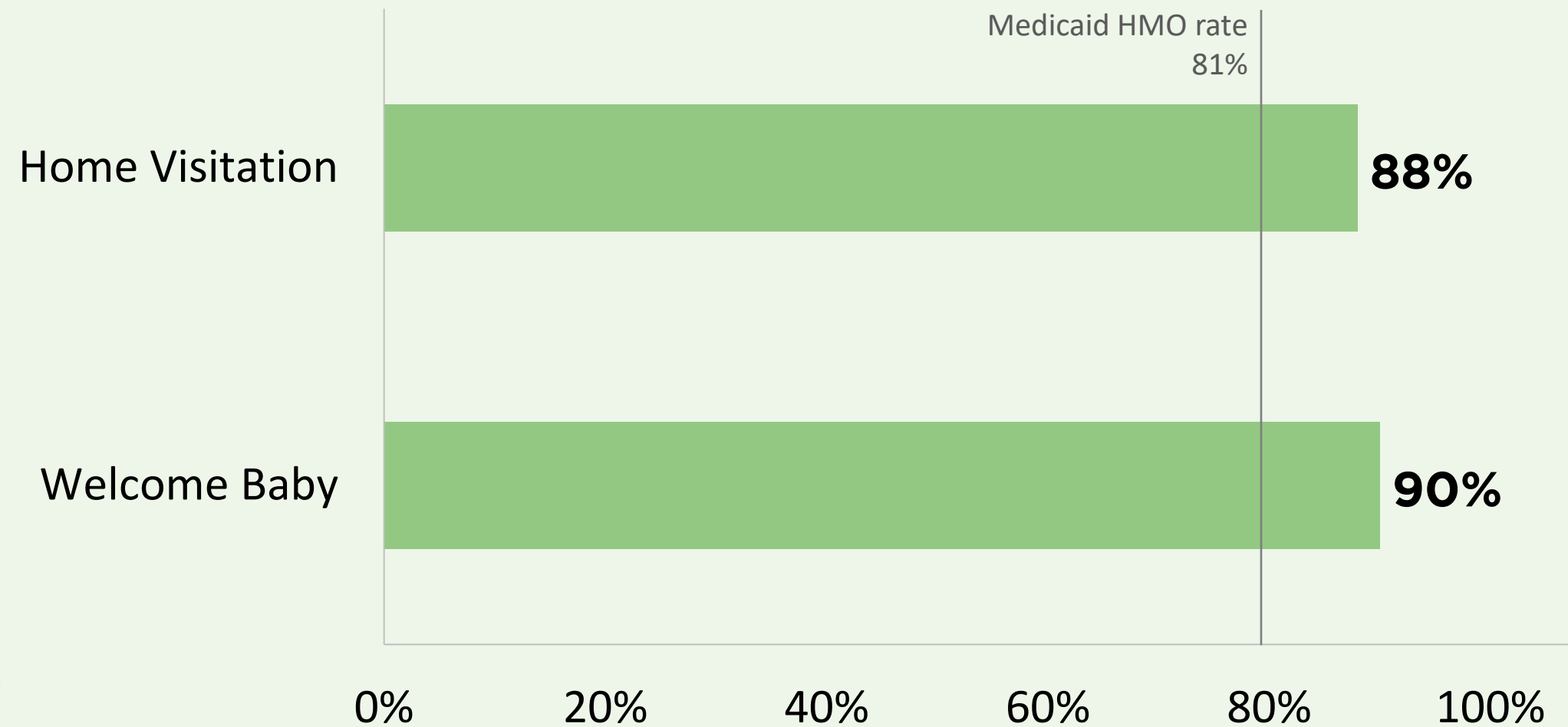
16%

**Food
Insecurity**



Program Impact - HEDIS 6 Week Postpartum Checkup

New mothers who attended their 6-8 week checkup with a healthcare provider



Program Impact - Depression & Anxiety Screenings



34,000+

Depression Screenings Completed

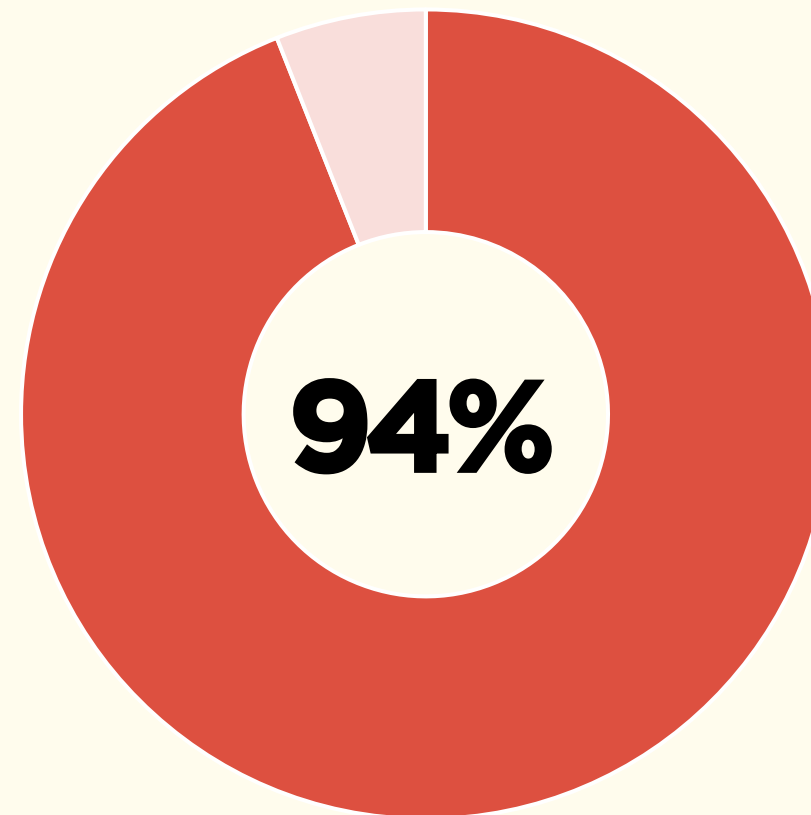
13,000+

Anxiety Screenings Completed

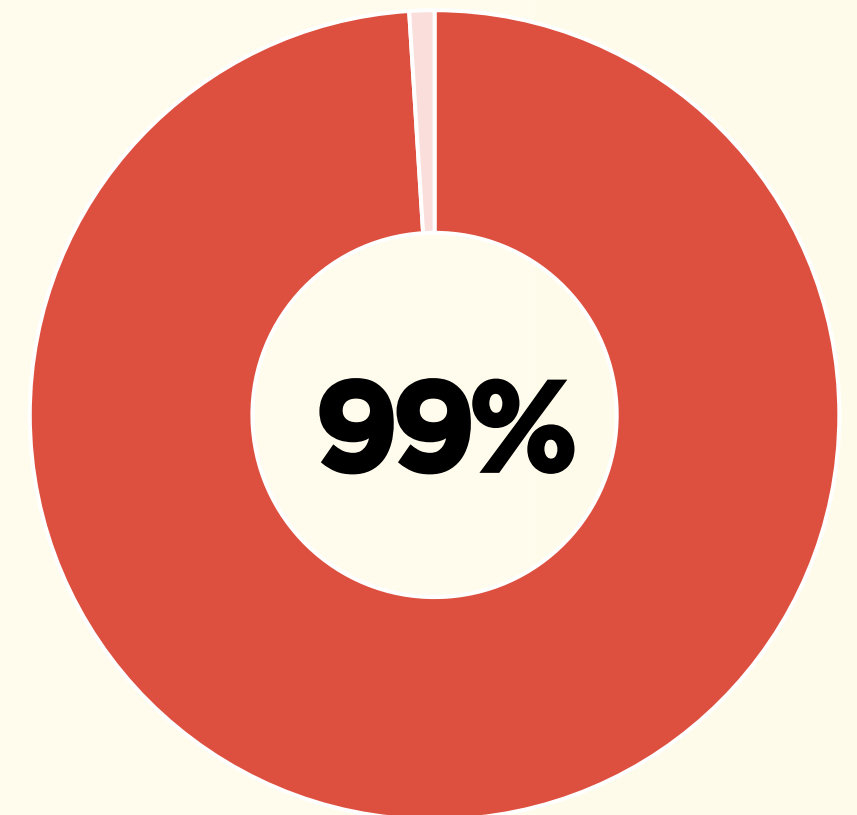
Caregivers screened for depression
within 3 months of childbirth



Home Visitation

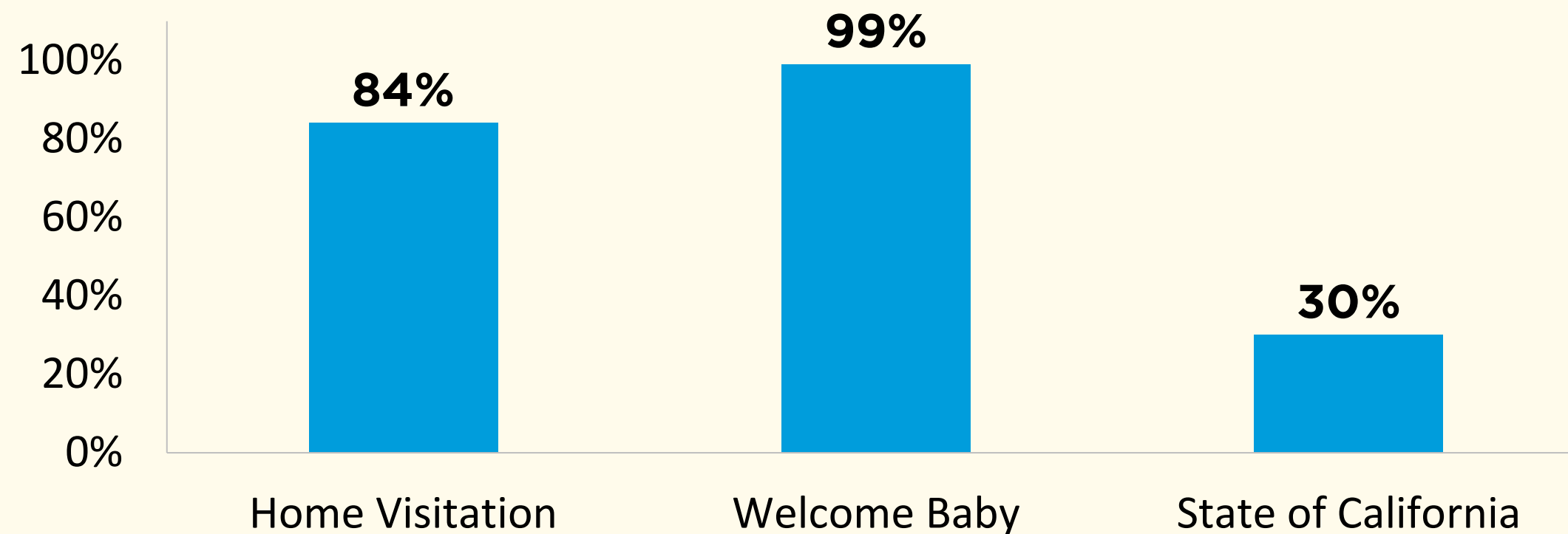


Welcome Baby



Program Impact - Child Developmental Screenings

Child received at least 1 developmental screening in the past year



11,000+
Developmental Screenings Completed

—————♥—————
“Thank you for supporting me to complete the regional services application....My son received early intervention services and now [he] is doing great because of your support.... You were not just a Parent Educator for me; you were my friend and part of my family.”
— Child Care Resource Center



Program Impact - Childhood Immunizations

At the 12-Month Visit

90%

of Home Visitation families reported being up-to-date on child's immunizations



At the 9-Month Visit

97%

of Welcome Baby families reported being up-to-date on child's immunizations





Program Impact - Community Referrals

18,600+

successful referrals this year

Connecting families to vital community services



8,500+
Charitable Services



2,000+
Parent or Education Group



1,900+
Food Needs



1,600+
Lactation Support

Program Impact - Community Referrals: Increased Referral

>10%↑

>30%↑



WIC



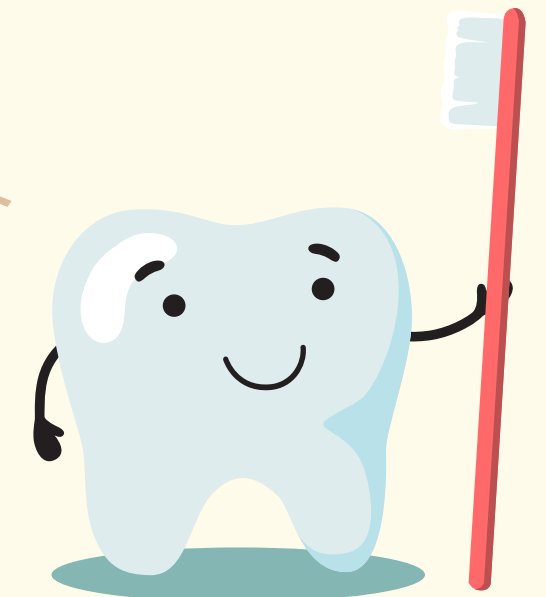
**Intimate Partner
Violence/
Restraining
Order**



Food Bank



**Head Start/
Early Head Start**



Dental Care



Program Impact - Client Goals for Home Visitation

1,870+
Goals Completed

3,500+
Goals Started



**Infant/Toddler
Development**

Employment

Education

Basic Essentials

Top 5 Goal Categories

**Child Health, Medical
and Dental Care**



Story: Program Impact - Client Goals

This client is a first-time mother to a three-year-old. She is a Spanish speaking mother who faced postpartum depression and received judgement from her in laws about she was caring and raising her child.

Since enrolling in the PAT program,, she began receiving mental health services and....has set boundaries with her in laws. She also took the initiative to enroll in the community college where she started taking ESL classes, where her enthusiasm and effort was recognized by the teacher and was offered a part time job as a teacher assistant for ESL classes....This mother was supported by her PE with resources for childcare, food, diaper donations, self-care items, and household donations. We also provided a car seat for the child's safety after she obtained her Driver's license....

During a recent home visit the client expressed her gratitude to the PE, saying: "If nobody has ever thanked you for your job and your support, I want you to know that I am grateful for all you do. You have helped me though my depression and anxiety and teaching me to understand services around me that I did not know about...."

- SHIELDS for Families - PAT



Program Completion - Home Visitation

170+

Families graduated



19.2 months

Average number of months enrolled



570+

Enrolled for 2+ years



STANDOUT SITES



Human Services Association



El Nido Family Centers



SHIELDS for Families



Child Care Resource Center



Foothill Family Services



Program Completion - Welcome Baby

5,400+
Welcome Baby
Graduates



2,900+
WB Light Families

2,400+
WB Full Families

STANDOUT SITES

-  Adventist Health White Memorial Hospital
-  California Hospital Medical Center
-  St. Mary's Medical Center
-  MemorialCare Miller Children's & Women's Hospital





Thank you to all of the LABBN teams and the sites in the network for all the work that you do!

