

## VIRTUAL PANEL



# LA COUNTY MENTAL HEALTH RESOURCE PANEL

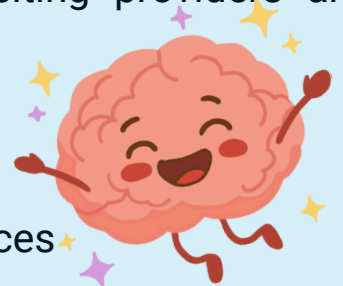
**PRESENTED BY THE REFERRALS WORKGROUP OF THE CONSORTIUM**

This 2-hour panel webinar will provide information, resources and insights into mental health services that are available in LA County.

This webinar is **FREE** and open to all LA County home visiting providers and Consortium partners.

Participants will:

1. Learn about available perinatal and family mental health services
2. Understand referral pathways and eligibility criteria
3. Identify strategies to support families experiencing barriers to accessing care
4. Gain practical tips to navigate mental health systems and managed care plans



## PARTICIPATING AGENCIES



JEWISH FAMILY SERVICE LA

LA COUNTY  
DEPARTMENT OF  
MENTAL HEALTH

MATERNAL MENTAL  
HEALTH NOW

BRIGHTLIFE KIDS

HELP ME GROW

RAISING BABY



## INFORMATION & REGISTRATION



Thursday, May 7th, 2026



10:00 AM - 12:00 PM



Registration: <https://tinyurl.com/5n99d4r7>

